

buildingSMART NORDIC CLIENT SEMINAR

COPENHAGEN – 31.01.2013

10:00 Opening, *Henrik L. Bang, Director Danish Association of Construction Clients, Steen Sunesen and Jan Karlshøj*

10:30 Sustainability by openBIM

Óskar Valdimarsson, CEO, Government Construction Contracting Agency

11:00 From politics to openBIM Requirements, *Kjell Ivar Bakkmoen, South East Norway Regional, Health Authority, Norway*

11:30 Lunch

12:30 Finnish requirements for energy simulation, *Tuomas Laine, Director, Innovation and Development, Granlund Oy*

13:00 openBIM in Architectural Competitions, *Marianne Thorbøll, Architect, Danish Building Property Agency*

13:30 Break

14:00 openBIM IS PROFITABLE!, *Peter Hauch - Arkidata*

14:30 Sustainable Value Perspective for Architecture, *Jakob Strømmand-Andersen, Henning Larsen Architects, Denmark*

15:00 Break

15:15 openBIM based Communication in large projects

Marcus Bengtsson, BIM-management team, White/Tengbom Architects

15:45 Discussion, *Stig Brinck*

16:45 Workshop closure

17:00 After-meeting networking

buildingSMART NORDIC CLIENT SEMINAR

COPENHAGEN – 31.01.2013

buildingSMART INTERNATIONAL

buildingSMART PROJECTS

buildingSMART NORWAY

buildingSMART NORDIC

NORDIC CLIENT SEMINAR OBJECTIVES

SUMMARY

buildingSMART INTERNATIONAL

COPENHAGEN – 31.01.2013 – STEEN SUNESEN

buildingSMART INTERNATIONAL

A neutral, international and unique non for profit organization supporting open BIM through the life cycle.

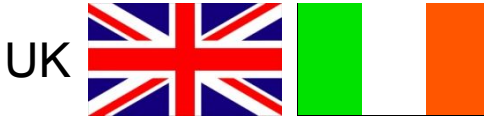
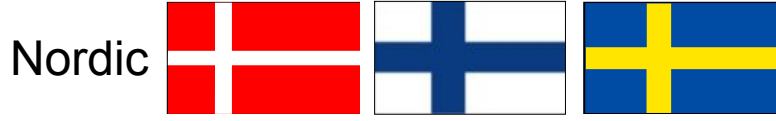
Vision

Sustainability by building SMARTER

Mission

Contribute to **sustainable built environment** through smarter **information sharing** and communication using **open international standards** in the building and construction sector, private and public.

15 REGIONAL/NATIONAL CHAPTERS
27 COUNTRIES

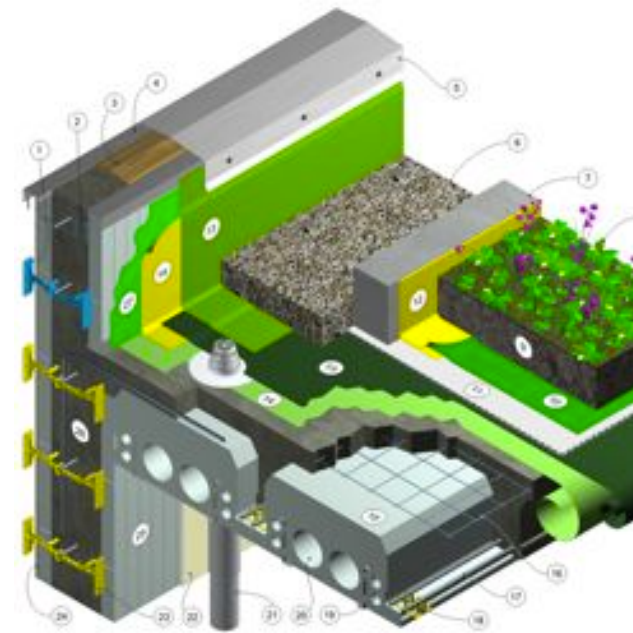
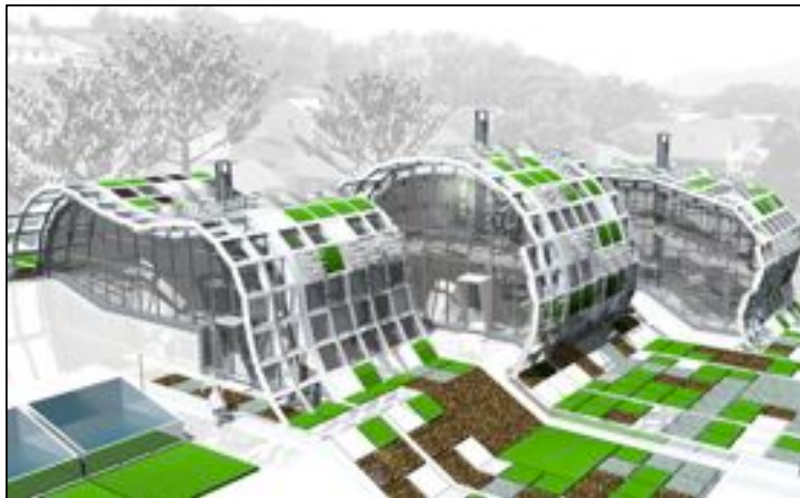


buildingSMART INTERNATIONAL

COPENHAGEN – 31.01.2013 – STEEN SUNESEN

INDUSTRY NEEDS openBIM

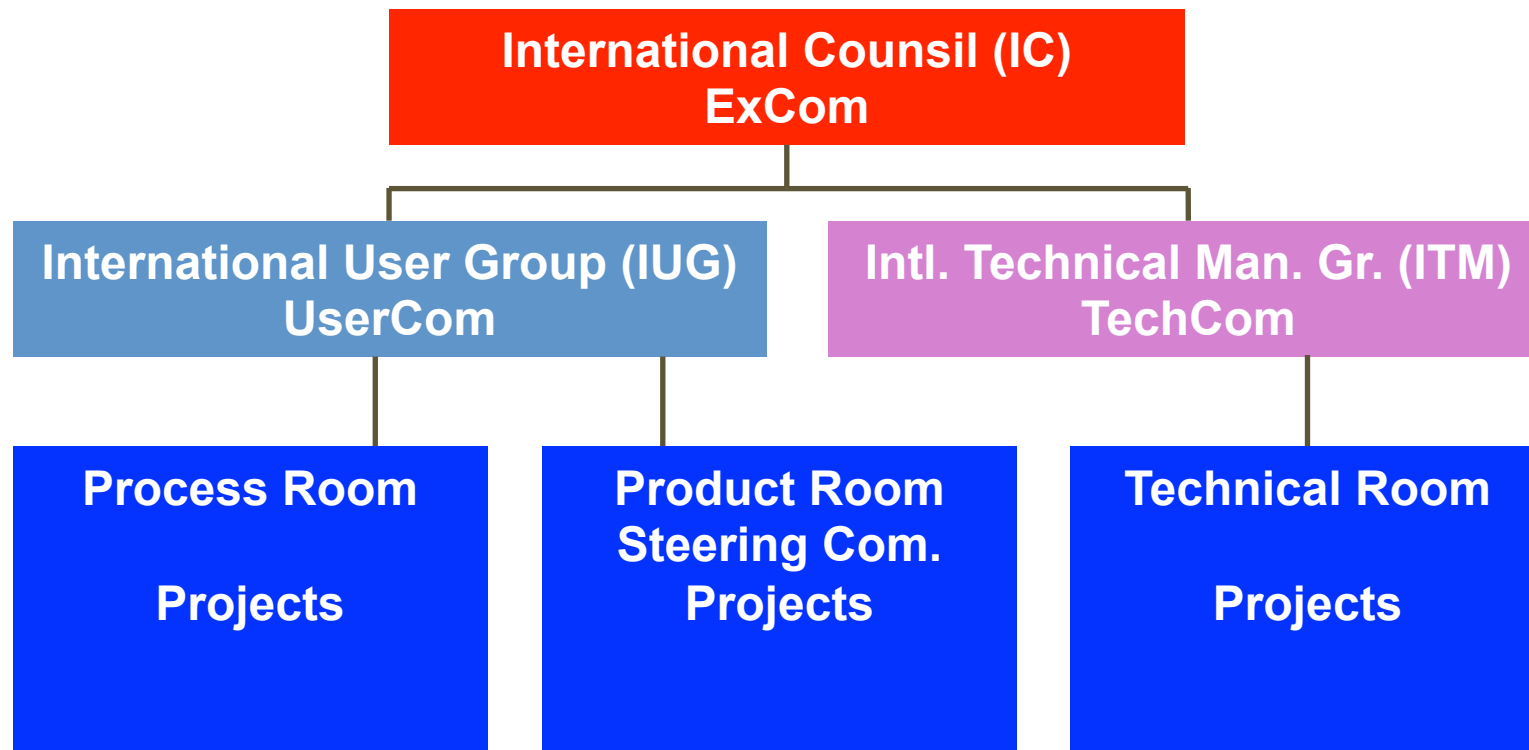
Sustainable building and estate industry requires **valid** information about cost, quality and performance at right **level of detail** and at right **time**



buildingSMART INTERNATIONAL

COPENHAGEN – 31.01.2013 – STEEN SUNESEN

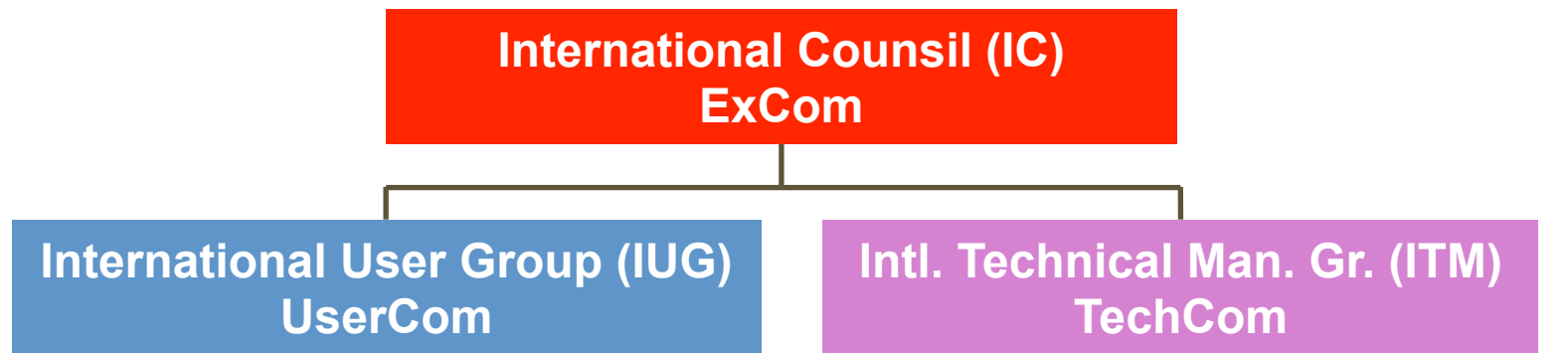
buildingSMART INTERNATIONAL



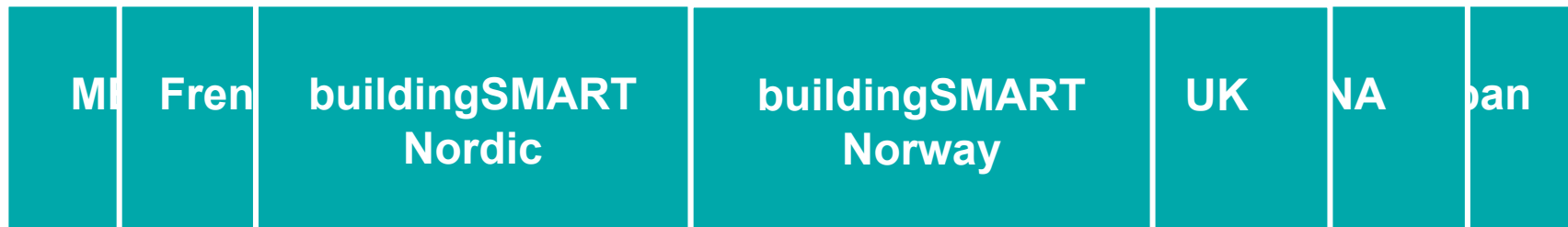
buildingSMART INTERNATIONAL

COPENHAGEN – 31.01.2013 – STEEN SUNESEN

buildingSMART INTERNATIONAL

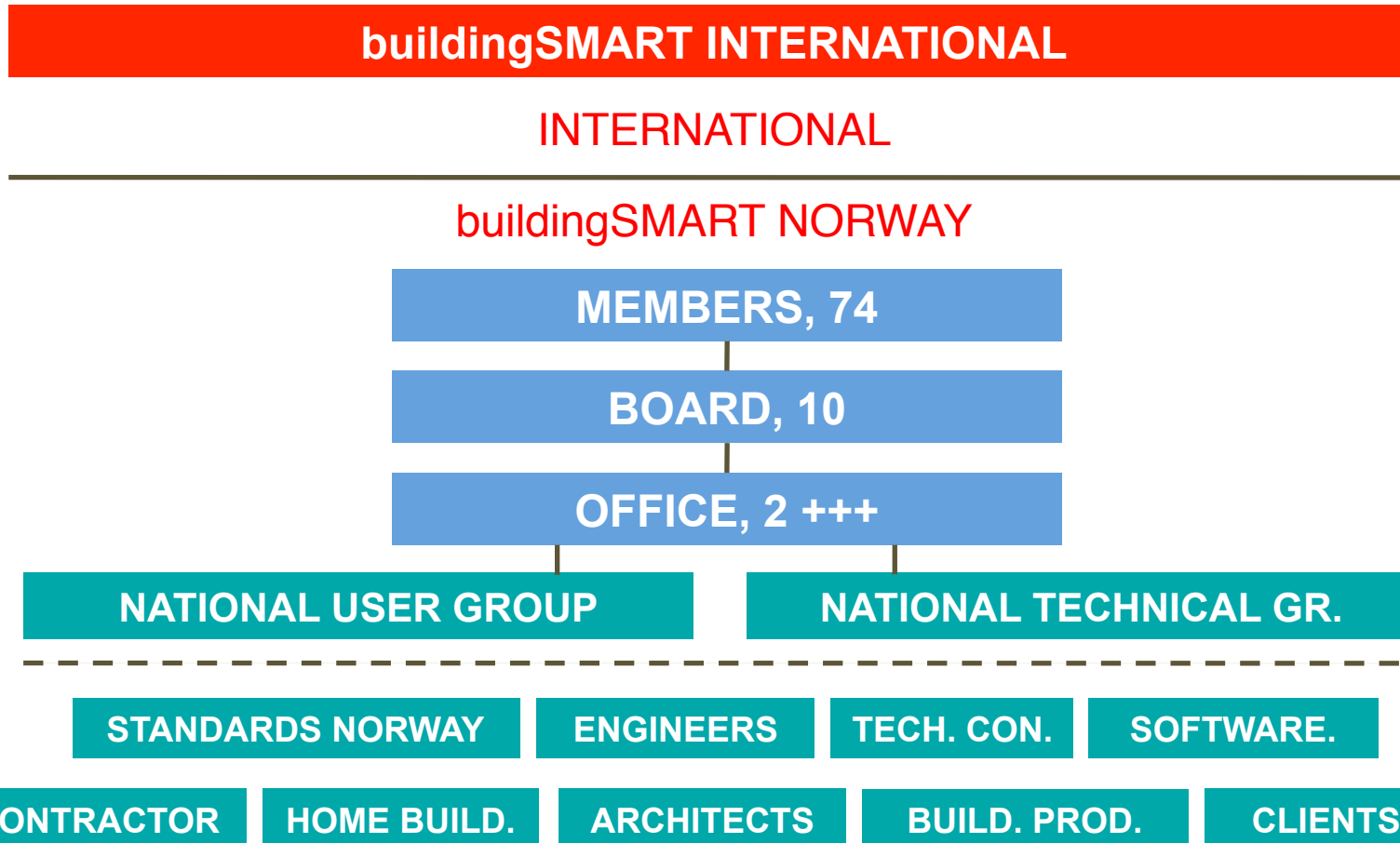


NATIONAL/REGIONAL CHAPTERS



buildingSMART NORWAY

COPENHAGEN – 31.01.2013 – STEEN SUNESEN



buildingSMART NORWAY

COPENHAGEN – 31.01.2013 – STEEN SUNESEN

CLIENTS

HELSE SØR-ØST
STATSBYGG
FORSVARSBYGG
AVINOR
ST. OLAVS HOSPITAL
NORGES BYGG OG EIENDOMSFORENING
UNDERVISNINGSBYGG OSLO KF
HELSEBYGG MIDT-NORGE

buildingSMART NORWAY

COPENHAGEN – 31.01.2013 – STEEN SUNESEN

CLIENTS

JOINT STATEMENT – openBIM

Background

Our organizations have already implemented open international buildingSMART standards in our new building projects, as we consider this is the most future oriented solution for the building industry. Open standards, based on user-driven development of technology, gives the possibility to achieve seamless data exchange between all domains through the whole projectbuilding life cycle. Based on this, our organization has chosen buildingSMART's openBIM standards as the foundation for exchange (export, import), storage and process of the Building Information Model. We consider the adaptation of open international standards as crucial in order to achieve the goals we have set for our organizations.

Intent

We consider predictability as a major value in our business development plan, and we want to give the building industry a clear understanding of our intentions.

Within 1st of July 2016 we will demand that all software used in our projects in order to create, edit, store or process data from the Building Information Model, shall support complete interoperability, by communicating and sharing building information based on openBIM and be certified to export, link and import all information in the latest official version of open international format like IFC (ISO 16739) and BuildingSMART International official IDMs and Model View Definitions.

Open Signatory Process

Our intention and our wish are that new signatories will be added to this public statement. Signatories are intended to be other building owners in Norway. New signatories must approve this public statement and must be accepted by all the existing signatories.

Annual Review

As the implementation of openBIM is rapidly evolving, we expect the signatories to conduct an annual review of this Public Statement and revise it - based on consensus - according to new developments.

The following signatories agree with the intentions of this Public Statement.

buildingSMART NORWAY

COPENHAGEN – 31.01.2013 – STEEN SUNESEN

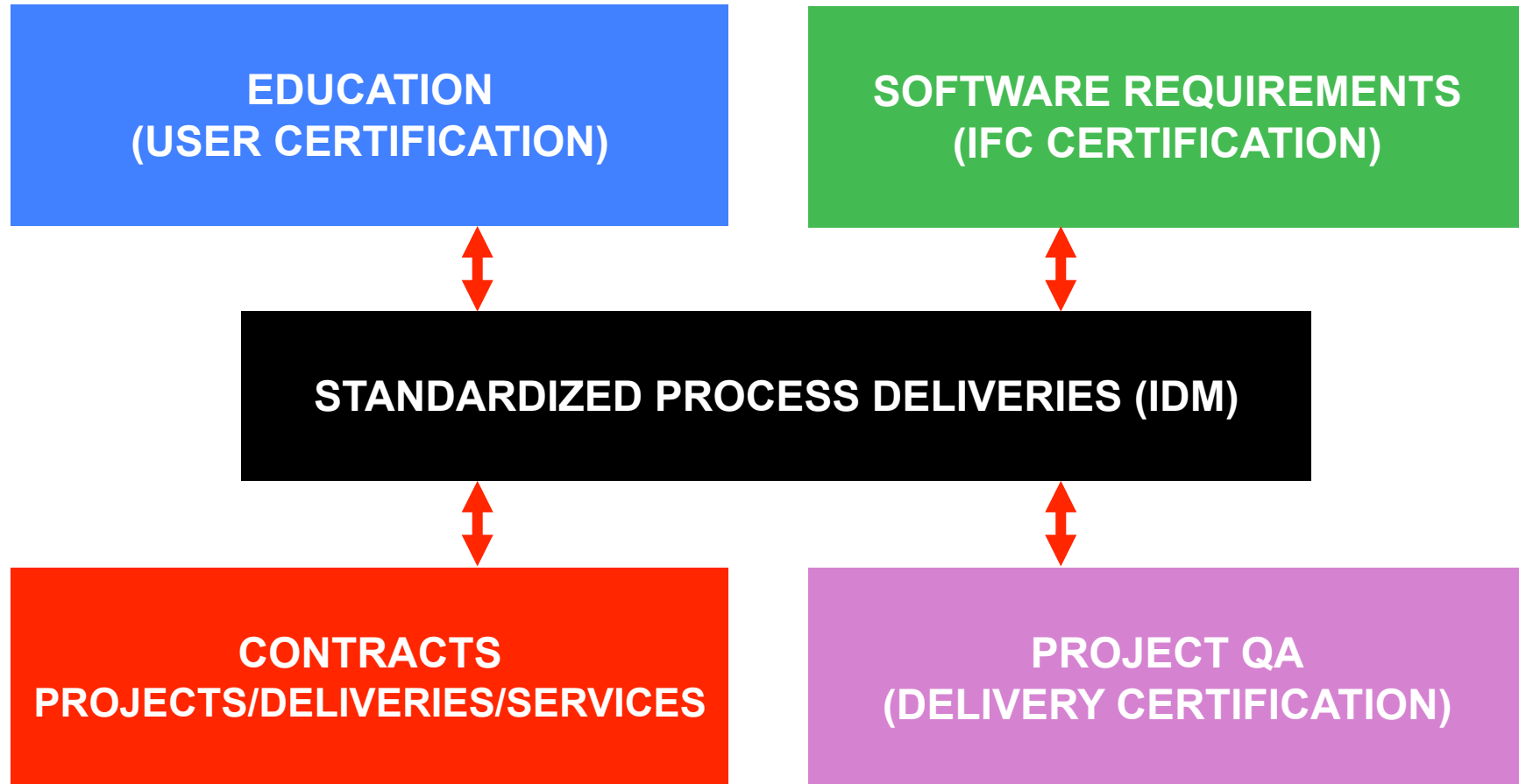
CLIENTS

EXCERPT FROM JOINT STATEMENT - openBIM

Within 1st of July 2016 we will demand that all software used in our projects in order to create, edit, store or process data from the **Building Information Model**, shall support complete interoperability, by communicating and sharing building information based on **openBIM** and be certified to export, link and import all information in the latest official version of open international format like **IFC** (ISO 16739) and **BuildingSMART International official IDMs and Model View Definitions.**

buildingSMART NORWAY

COPENHAGEN – 31.01.2013 – STEEN SUNESEN



buildingSMART NORWAY

COPENHAGEN – 31.01.2013 – STEEN SUNESEN

BUILDING PROGRAMMING

information exchange

An attempt to **standardize** through **buildingSMART** the way we define **requirements** to a building project.

SOFTWARE REQUIREMENTS (IFC CERTIFICATION)

Organizations so far...
Statsbygg
bS International
AEC3
Granlund
VTT/Granlund/Salford University
Statsbygg
dRofus/Nosyko
buildingSMART Norway

Other chapters and organizations are welcome...

buildingSMART NORWAY

COPENHAGEN – 31.01.2013 – STEEN SUNESEN

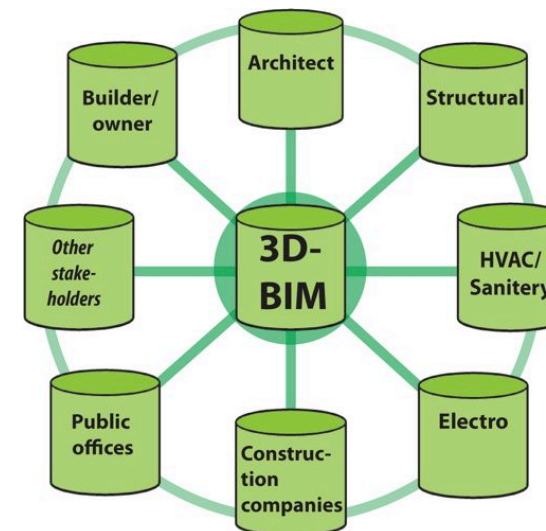
FACILITY MANAGEMENT information exchange

Get **all the relevant information** into the openBIM in order to get a **complete FM documentation** in BIM.

Ensure that FM documentation is a **natural part of the ongoing openBIM delivery** to the project.

Enrich the openBIM standard with **properties and propertysets necessary from a Facility Management perspective.**

SOFTWARE REQUIREMENTS (IFC CERTIFICATION)



Other chapters and organizations are welcome...

buildingSMART NORDIC

COPENHAGEN – 31.01.2013 – JAN KARLSHØJ

Nordic Web site: <http://buildingsmartnordic.org/>

Organisation

- Chairman: Jan Karlshøj, jan.karlshoej@gravicon.dk
- Vice chair: Tiina Koppinen, tiina.koppinen@skanska.fi
- Treasurer/Business Manager: Christer Finne, christer.finne@rts.fi
- Secretary/Technical Coordinator: Väino Tarandi, vaino.tarandi@abe.kth.se
- Board members
 - Hans Lif: hans.lif@ramboll.se
 - Søren Spile: ss@bips.dk
 - Tomi Henttinen , tomi.henttinen@gravicon.fi
- Observers from buildingSMART Norway
 - Steen Sunesen, steen.sunesen@buildingsmart.no
 - Kaare Kleven, kaare.kleven@sweco.no

Finland

Sweden

Denmark

buildingSMART NORDIC

COPENHAGEN – 31.01.2013 – JAN KARLSHØJ

Finland

- Web <http://www.buildingsmart.fi/>
- Common BIM Requirements 2012
<http://www.en.buildingsmart.kotisivukone.com/3>
- Chairman: Tomi Henttinen, Gravicon

Sweden

- Web: <http://www.buildingsmart.se/>
- Collaboration with openBIM
- Chairman Väino Tarandi, KTH

Denmark

- Web <http://bips.dk/v%C3%A6rkt%C3%B8jsomr%C3%A5de/buildingsmart#0>
- Part of bips
- Chairman of buildingSMART Denmark: Stig Brinck, Niras

buildingSMART NORDIC CLIENT SEMINAR

COPENHAGEN – 31.01.2013

NORDIC CLIENT SEMINAR OBJECTIVES



FIND COMMON NORDIC INTERESTS AND PROJECTS



buildingSMART NORDIC CLIENT SEMINAR

COPENHAGEN – 31.01.2013

DISCUSSION AND SUMMARY

Requirements for **energy simulation**

Sustainability by openBIM

openBIM IS **PROFITABLE!**

openBIM in Architectural **Competitions**

openBIM **Communication**

From politics to openBIM **Requirements**

Sustainable **Value Perspective**

buildingSMART NORDIC CLIENT SEMINAR

COPENHAGEN – 31.01.2013

WHY SPEND A WHOLE DAY TOGETHER?

- To listen and to learn
- To chat and network
- To find others to cooperate with...
- ... to define common requirements in vital areas.

buildingSMART NORDIC CLIENT SEMINAR

COPENHAGEN – 31.01.2013

BENEFITS OF WORKING ON NORDIC LEVEL

- 4x More attractive (in size) market for software developers
- 4x Ressources
- 4x Competence and experience
- If we agree with each other, probably other will too

DOWNSIDE WORKING ON NORDIC LEVEL

- We have to agree with each other

buildingSMART NORDIC CLIENT SEMINAR

COPENHAGEN – 31.01.2013

COMMON NORDIC INTERESTS AND PROJECTS

GENERAL REQUIREMENTS

openBIM
Guidelines
FI/DK/NO

Joint
Statement
NO

GUIDELINES

DISCUSS COMMON GUIDELINES? YES!

BUT ALSO LOOK INTO IMPLEMENTATION/EDUCATION OF INDUSTRY
LIFE CYCLE PERSPECTIVE – USAGE OF DATA OF END-USERS

JOINT STATEMENT

SOLUTIONS FOR openBIM FACILITY MANAGEMENT

buildingSMART NORDIC CLIENT SEMINAR

COPENHAGEN – 31.01.2013

COMMON NORDIC INTERESTS AND PROJECTS

SPECIFIC DELIVERY REQUIREMENTS

Building
Programming
(BPie)

Facility
Management
(FMie)

FMie

DK WANTS TO PARTICIPATE – "WARMING UP"

openBIM SWEDEN/FI2 SHOULD SHARE AND BENEFIT FROM FMie

bS SWEDEN IS A GO

BPie

INTL. PROJECT

buildingSMART NORDIC CLIENT SEMINAR

COPENHAGEN – 31.01.2013

COMMON NORDIC INTERESTS AND PROJECTS

SPECIFIC DELIVERY REQUIREMENTS

openBIM in
Competitions
DK/NO

Energy
Analysis
FI

openBIM IN COMPETITIONS

DK IDM WILL BE DISTRIBUTED TO SEMINAR PARTICIPANTS

CAN openBIM COMPETITION REQUIREMENTS ALSO ADD VALUE TO ARCH.'S PROCESS.

ENERGY ANALYSIS

bS CAN BRING TOGETHER NORDIC ORG. WITH INTEREST IN E.A.
LOOK AT SOLIBRI AREA RULE CHECKER.

OTHER ANALYSIS? LETS NOT RULE OTHER VALUE ADDING PROCESSES
OUT. BUILDING PERMIT TOMI/FINLAND

buildingSMART NORDIC CLIENT SEMINAR

COPENHAGEN – 31.01.2013

buildingSMART NORDIC/NORWAY

- buildingSMARTs mission is to facilitate your networking
- Distribute todays presentations and relevant additional documentation (IDM for arch. competitions)
- Facilitate contact and coordination of network groups

- FEEDBACK: MORE TIME FOR NETWORKING AND DISCUSSIONS FOR NEXT MEETING