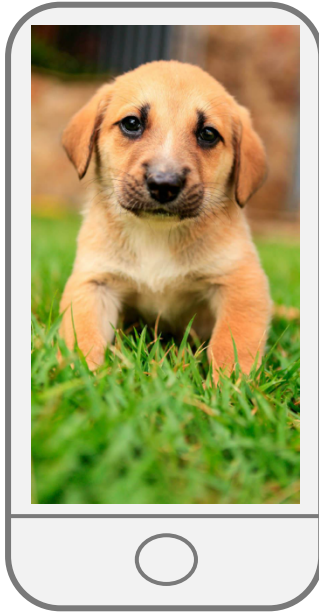


bmsync

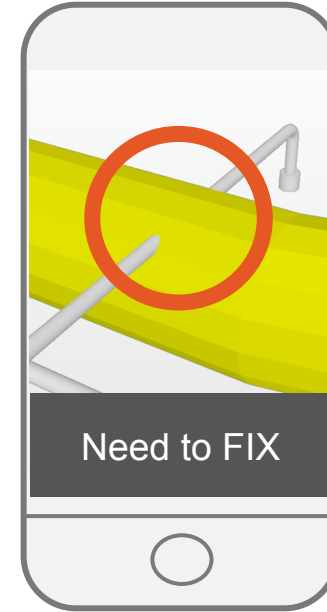
Catenda, September 2015

bmsync

 CATENDA



you have complete
control of your
social life here



you should have
complete control
of your projects here
as well

data for gode beslutninger



CATENDA

kunnskap i optimal samhandling

Om selskapet

9 ansatte

Kontorer i Elverum, Bergen og Oslo

Spunnet ut av SINTEF Byggforsk

Sunn drift

Heleid av ansatte

Grunnverdier: Åpenhet og kvalitet

Skal vokse

Kompetanse

Tung byggfaglig og IT-faglig kompetanse

3 doktorgrader

Medlem av MSG (utviklere av IFC standarden)

Medlem av TWG (teknisk forvalter av buildingSMART Dataordbok)

Utviklere av BCF

buildingSMART Norge medlem

åpne internasjonale standarder

Catendas løfte:

du eier dine data
data du legger inn
skal du kunne ta med ut

bomsync

bomsync

 CATENDA

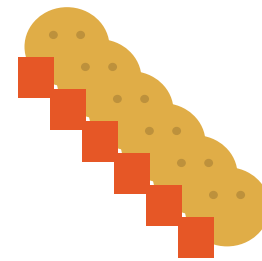
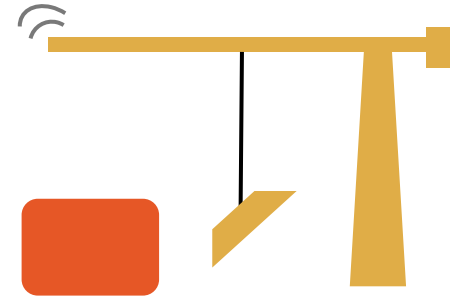
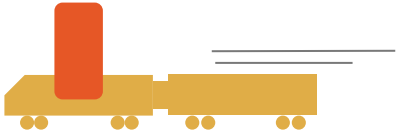
plattform

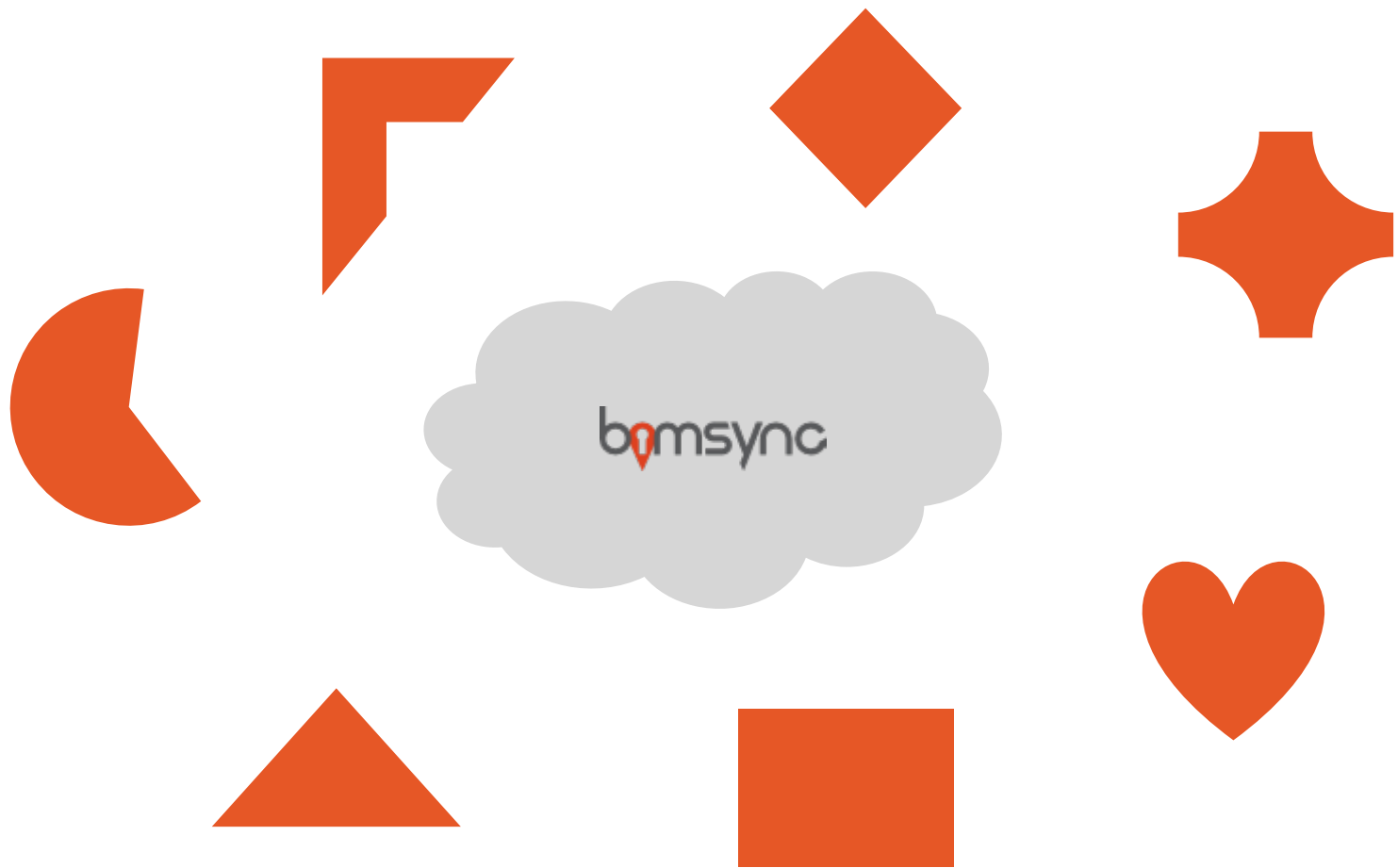
åpen

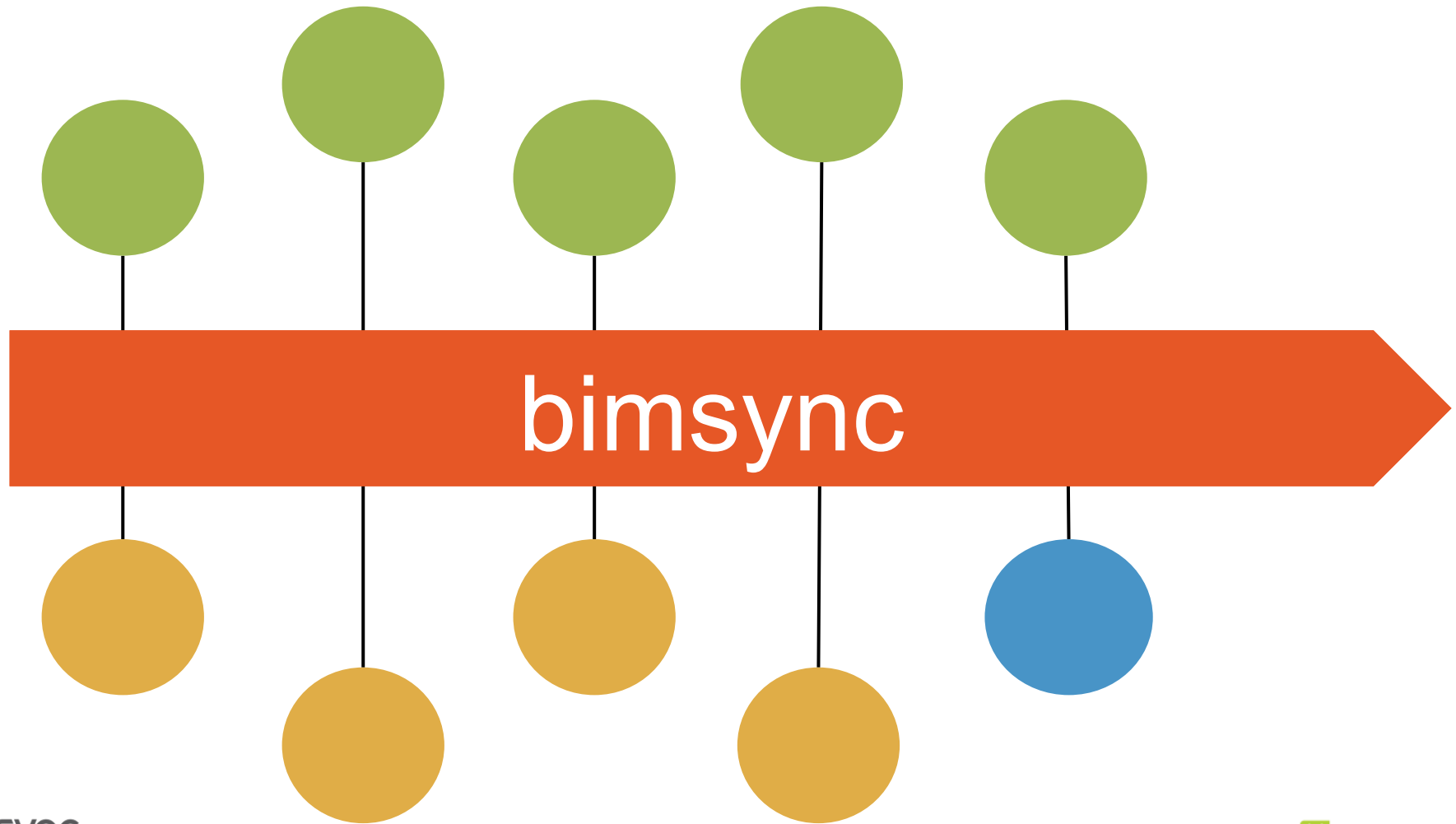
BIM

BIM

den beste informasjonsstrukturen
for ALL informasjon







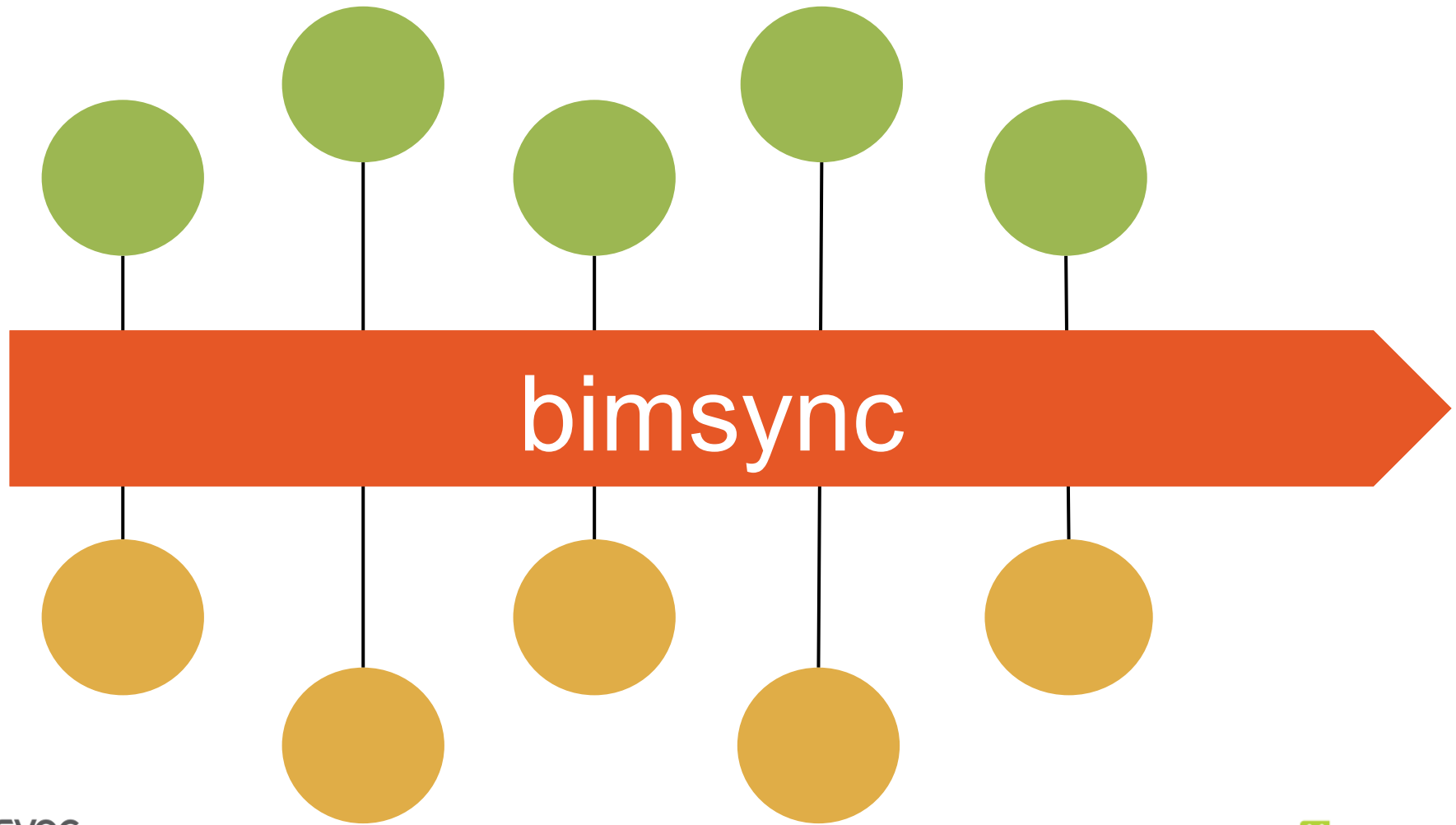
sky løsning

grafisk bruker grensesnitt

bimsync

Application Programming Interface

integreres med andre systemer



OCTOBER 4, 2013 BY DAG FJELD EDVARDSEN

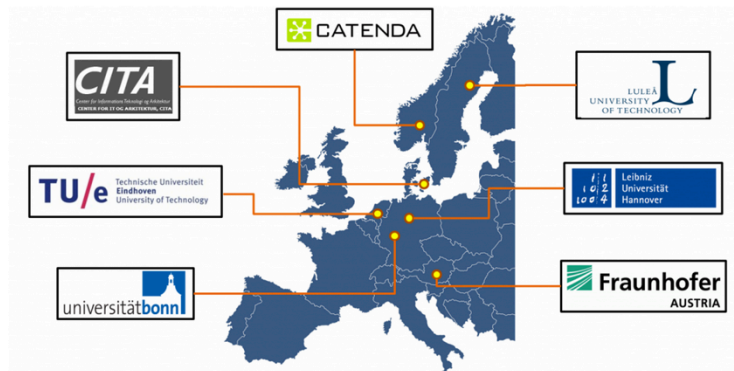
LEAVE A COMMENT

DuraArk – long term BIM storage

The EU commission has financed a 3-year research project called DuraArk. Catenda is the Norwegian partner.



DuraArk — short for Durable Architecture — is about long term storage of architectural information. Architectural information can be a 3D point cloud of a building or a BIM (Building Information Model) of the building. In addition to the geometry we want to store other relevant information about the building using semantic technology (buildingSmart Data Dictionary; bsDD/IFD and semantic web). The target group is both those interested in preservation of building information and the construction industry. It is easier to plan a high quality restoration or repurposing of a building with this information available.



Usage example 1: Add product info



Usage example 2: Green analysis



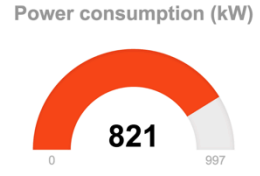
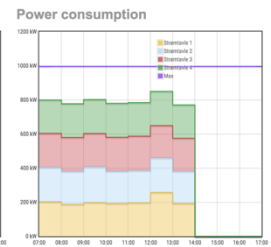
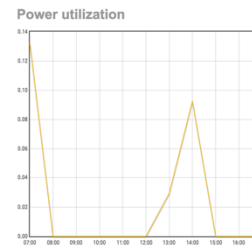
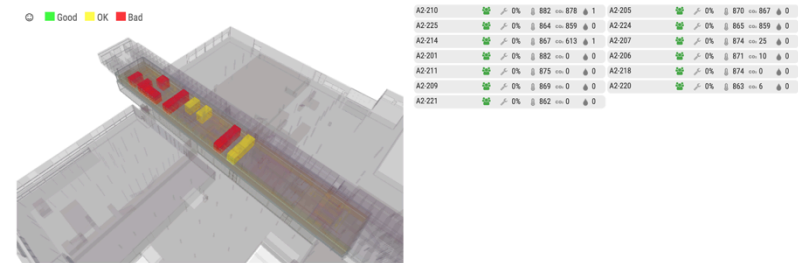
1 BIM based environmental impact estimate

Usage example 4: FM Operations

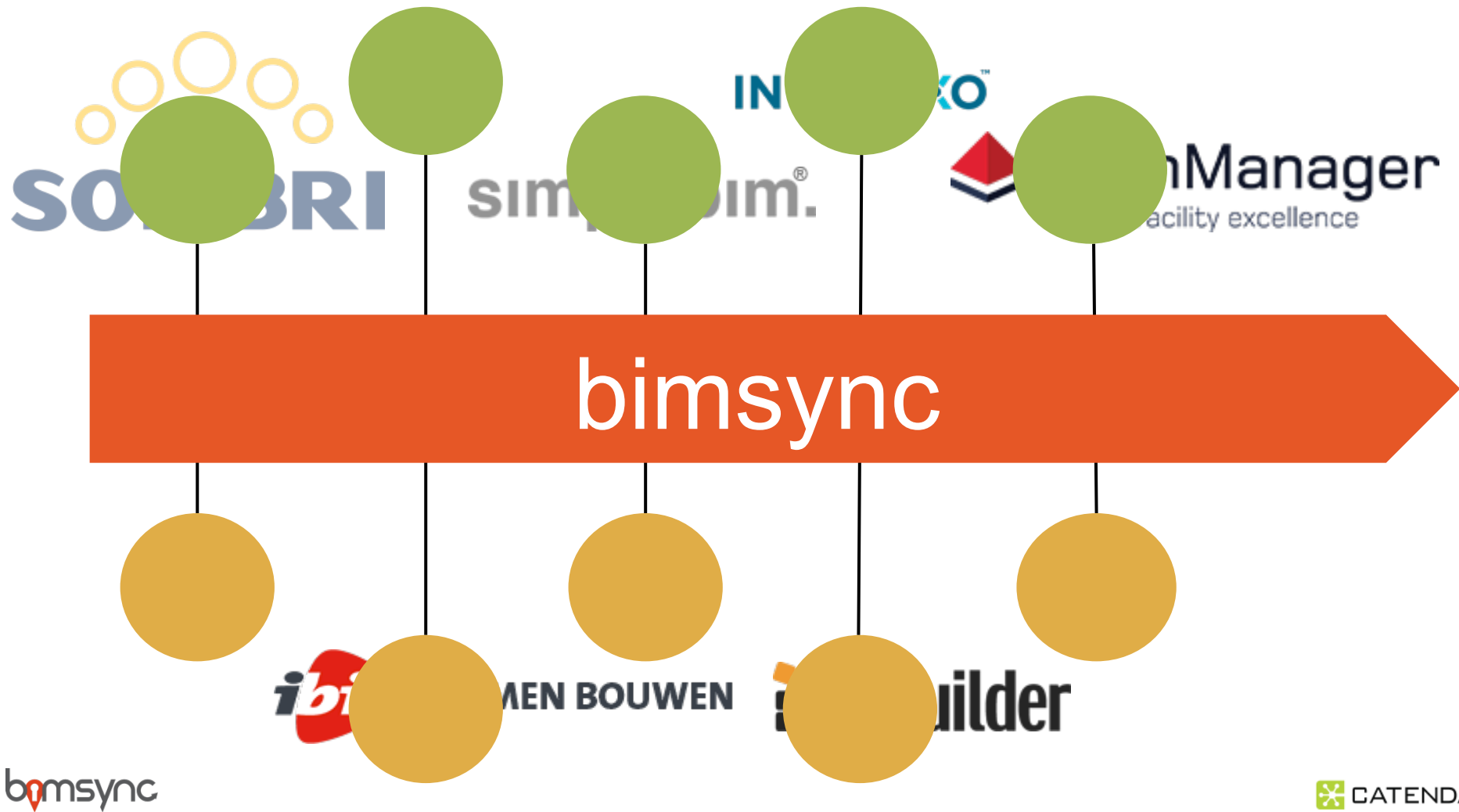


1 BIM based facility management/operations

Usage example 5: Building audit



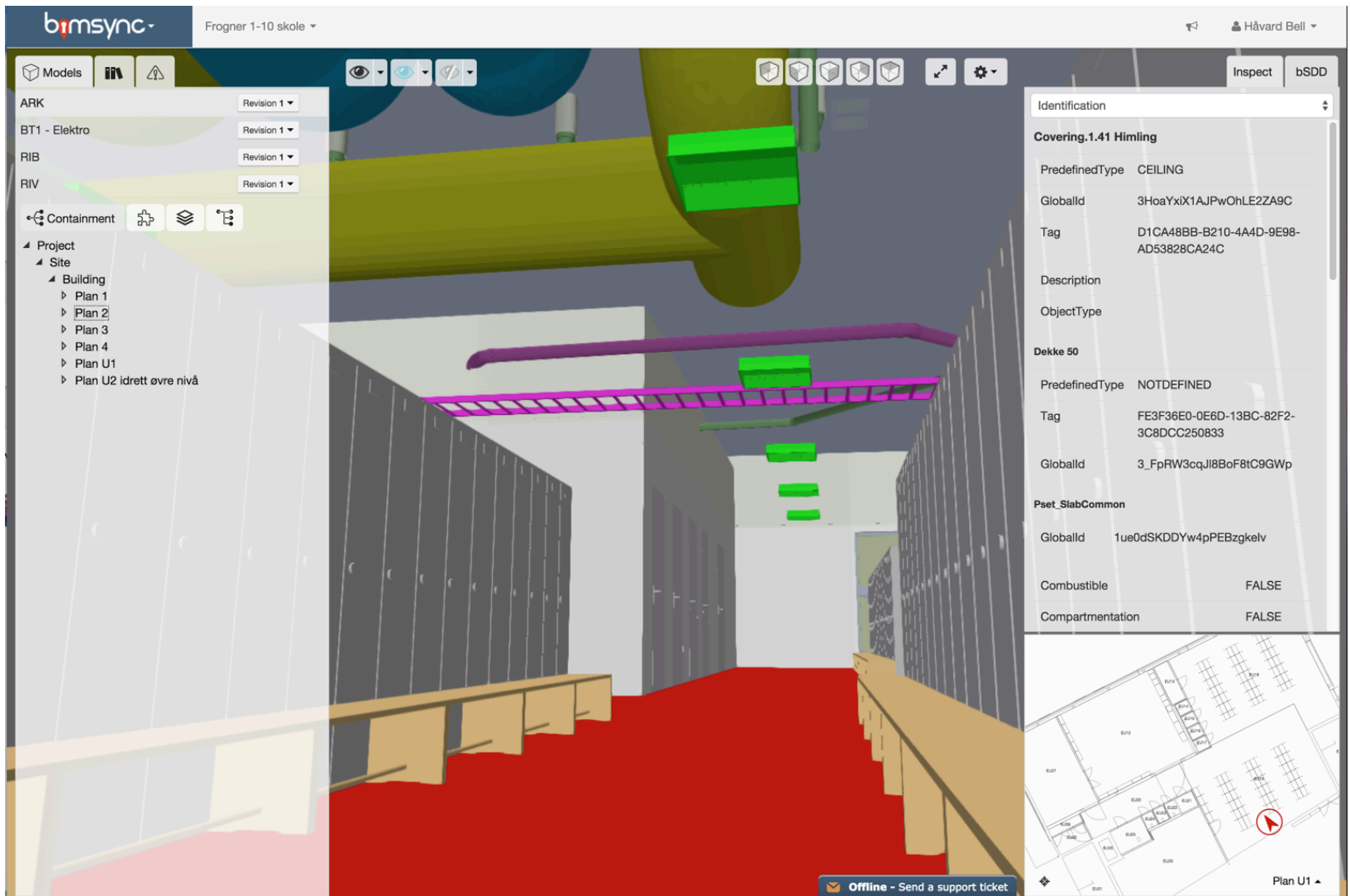
1 BIM based live monitoring of buildings



bimsync.com

bimsync

 CATENDA



auto classification

demo